

CONFERENCE PROGRAM

# Region 5 Medical Education Conference

Changing Lanes:  
Adapting to a New Normal



October 23-25, 2020

Hosted by the Student National Medical Association  
Indiana University School of Medicine Chapter



INDIANA UNIVERSITY

## Program Sponsors:

Eskenazi Health

IU Health

IU School of Medicine  
Anesthesia

IU School of Medicine  
Pediatrics

IU School of Medicine  
Educational Affairs

IU School of Medicine  
Office of Diversity Affairs

Marion County Health  
Department

Student National Medical  
Association  
Region V

IU Health/  
IU School of Medicine  
Cardiovascular Institute

IU School of Medicine

IU School of Medicine  
Department of Pathology

IU School of Medicine  
Radiation Oncology

IU School of Medicine  
Radiology & Imaging  
Sciences

IU Health  
Adult Academic Health  
Center

Ann & Robert H. Lurie  
Children's Hospital

IU School of Medicine  
Emergency Medicine

IU School of Medicine  
Medical & Molecular  
Genetics

IU School of Medicine  
Surgery

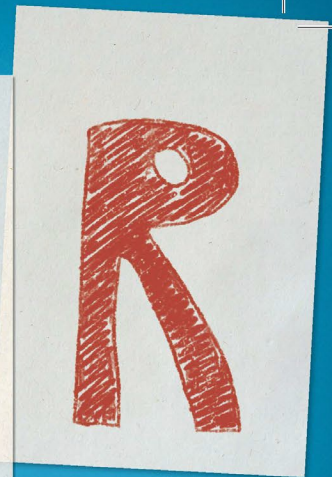
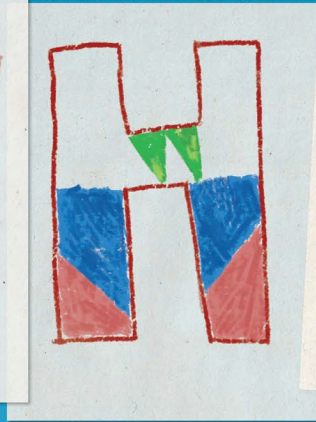
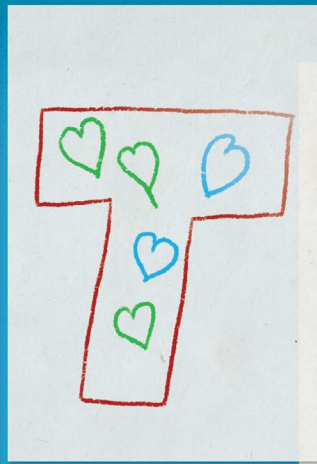
NMA Region IV

IU School of Medicine  
Family Medicine

## Table of Contents

Main Stage Events.....	12
Wellness Events .....	12
Grand Rounds .....	13
High School Track .....	14
Pre-Medical Student Track .....	15
Medical Student Track .....	16
Residents/Fellows .....	17
Workshops .....	18
Virtual Exhibitor Fair .....	19
Speakers.....	20
Sponsors .....	23





## Indianapolis, we see you.

As you awake each day  
And then rise to this extraordinary challenge.

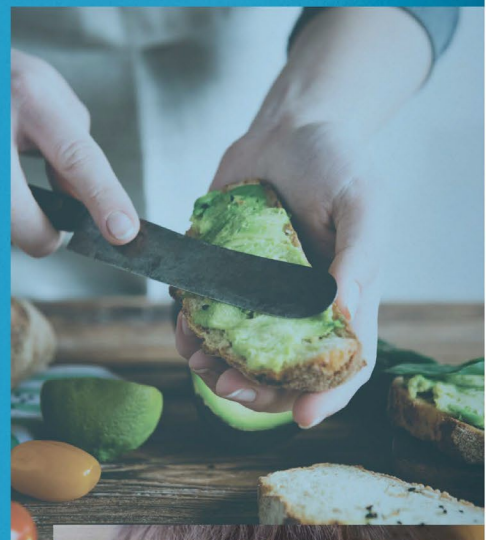
As chefs become line cooks  
Trading dinner plates for tin foil  
Making healthy meals for hungry kids.

As children become our champions  
Their scrawled encouragements  
Helping us all through another day.

As neighbors become tailors  
Turning t-shirts and button-downs  
Into handmade masks.

Indianapolis, we see you.  
And stand in awe of your strength and charity.  
Thank you for taking care of each other,  
And allowing us to take care of you.

## ESKENAZI HEALTH





Jay L. Hess, MD,  
PhD

Executive Vice  
President for  
University Clinical  
Affairs

Dean of the School  
of Medicine

Welcome from Indiana University School of Medicine. We count ourselves fortunate to have a highly active chapter of the Student National Medical Association contributing to the richness of our medical school community, and we are excited to be hosting the 2020 Region V Medical Education Conference, albeit virtually.

Certainly, in these unprecedented times, we've all had to adjust to a "new normal" of online meetings and classes. While we would have preferred to welcome you to our campus in person, the upside of a virtual conference is the opportunity for more people to participate. We are certain you will benefit from the insights of the conference speakers and the many workshops to help you on your journey in medicine.

When I reflect on this year's conference theme, Changing Lanes, I think back to the basics of making a lane change on the road:

- First, you recognize a lane change is needed and turn on your turnsignal.
- Then, you check your mirrors to look back to see what's behind you.
- Next, you check your blind spot to assess what's currently around you that you might not have noticed.
- And, then you change lanes by making the move and continuing forward.

In the current climate, we recognize change is needed. COVID-19 has not only forced many unavoidable changes in schedules, routines and priorities, but it has also uncovered the magnitude of health disparities in our country. And recent reprehensible events have highlighted the urgent need to address systemic racism in our nation, our communities, and even right here at IU School of Medicine.

We can look back upon the progress IU School of Medicine has made toward diversity, equity and inclusion, and feel pride—but we have not forgotten to check our blind spots. Here at the School, we've dedicated this time to listening and introspectively looking at how we can be better.

To ensure our medical school community is as strong as it can be, we have implemented multiple Diversity Task Forces and launched several other initiatives to identify and address issues of systemic racism, increase representational diversity, and start new conversations about race and inclusion.

We are glad each of you are joining us at this virtual conference, which offers opportunities to hear from many thought leaders in the area of institutional diversity—people who were once where you are, navigating educational systems and clinical learning environments as an underrepresented minority. These physicians have become leaders in their respective areas of medicine and highly valued leaders in our medical school community.

As we, as a society and medical community, move forward together in a new lane, we hope you sense that IU School of Medicine is a place where diversity is celebrated. Your participation in this year's Regional Medical Education Conference is deeply appreciated.

Welcome!

Sincerely,

A handwritten signature in blue ink that reads "Jay L. Hess". The signature is fluid and cursive.

Jay L. Hess, MD, PhD, MHSA  
Executive Vice President for University Clinical Affairs  
Dean of the School of Medicine  
Indiana University



Paul Wallach, M.D.

Executive Associate  
Dean of Educational  
Education

IUSM Executive  
Vice President for  
Education

Greetings:

It is with great pleasure that I welcome you to the 2020 Student National Medical Association Region V Virtual Medical Education Conference. The Indiana University School of Medicine is proud to host this gathering of colleagues underrepresented in medicine, including students, residents, and faculty from Michigan, Ohio, and Indiana.

2020 has been a year of transition. The meeting theme, “Changing Lanes: Adapting to a New Normal,” is both timely and relevant. While we are no strangers to change, the emergence of COVID-19 has pushed our healthcare environments to adapt rapidly in order to provide quality care to our patients. This year has also challenged us to recognize and address racism, lean into our discomfort, confront our biases, and develop into medical professionals who do not fear transformation but who boldly seek it out. We are committed to support our junior colleagues who are underrepresented in medicine, address the needs of underserved communities, and increase the number of clinically excellent, culturally competent, and socially conscious physicians.

I hope this virtual conference will be enjoyable and provide you with tools and experiences that will be valuable and meaningful to you. Once again, on behalf of the Indiana University School of Medicine, welcome.

Sincerely,

A handwritten signature in blue ink that reads "Paul M. Wallach". The signature is fluid and cursive, written over a light blue rectangular background.

Paul M. Wallach, MD  
Professor of Medicine  
Dolores and John Read Senior Professorship in Medical Education  
Executive Associate Dean, Medical Education,  
IUSM Executive Vice President for Education, IU Health



Alvaro Tori, MD,  
FAAP

Associate Professor  
of Clinical  
Pediatrics

Associate Dean for  
Diversity Affairs

Welcome to the Region 5 Medical Education Conference. My name is Alvaro Tori and I am a Pediatric Critical Care physician and the Associate Dean for Diversity Affairs at Indiana University School of Medicine.

My passion for diversity started early on in my career, when I realized that I couldn't find many people who shared the same identities I possessed. I couldn't see who I wanted to become. I started to find my voice and a few faculty mentors made me realize those identities I thought were weaknesses were actually strengths capable of bringing different perspectives and experiences that could lead to change in the learning and working environment. As I started participating in spaces where decisions were being made, I realized that there were people missing, people who could bring different perspectives and experiences, in addition to mine and the ones already present. I started asking myself, and everyone else, who is missing? who else needs to have a voice here? I do believe that is how change happens. When everyone is represented.

Our patient demographics is changing quickly. Our patients are getting more diverse and as healthcare providers, we need to be aware of the needs and the experiences of our patients. Representation matters to everyone involved in each aspect of healthcare. We must make sure that equity and justice is served for our patients.

I am so glad that conversations about inequities and social injustice are happening in offices, in the hallways, at dinner tables, and in coffee shops. However, we need to make sure that we institutionalize those conversations so we can truly make a difference. Equity, inclusion and justice is everyone's responsibility. This need to be a "we" approach.

And lastly, we need to remind ourselves who we are and what we are here for. Remind ourselves what gets us out of bed each morning. We all have something to offer, and no one is allowed to take away who we are and who we want to become. Don't let someone else tell people who you are, you tell your own story.

Let's celebrate and value the differences that we all bring with us today. We all need each other; our community needs us and our patients need us.

And remember, use your voice when you see injustice, don't let the silence be complicit.

Again, welcome to all of you and I hope you enjoy the conference. We are here to provide anything you need.

A handwritten signature in black ink, appearing to be 'Alvaro Tori'.

**Alvaro Tori, MD, FAAP**  
**He/Him/El**

**Associate Professor of Clinical Pediatrics**  
Division of Pediatric Critical Care Medicine, Department of Pediatrics  
**Associate Dean for Diversity Affairs**  
Faculty Affairs I Professional Development I Diversity



Emily Walvoord,  
MD, FAAP

Associate Dean for  
Student Affairs

Medical Student  
Education

Professor of Clinical  
Pediatrics

Pediatric  
Endocrinology

## Adapting to a New Normal

The practice of medicine is built on a sacred trust between a patient and their physician. It is an incredible privilege and honor to care for people when they are at their most vulnerable and the opportunity that we are given to help others is unparalleled. These foundational principles should never change. However, as current and future physicians, we need to be part of a change that our world desperately needs right now. We need to use our talents do better for our patients and better for each other.

The utterance of the term “new normal” has increased significantly over the past 4 years and has had an exponential increase since the start of the COVID-19 pandemic. Too often it is used to describe negative, unwanted changes in our lives. The times that we are living in right now are difficult, but none-the-less, I am incredibly inspired by the commitment that I have witnessed of so many young people, high school, college and medical students along with medical residents, to change the status quo and improve the lives of others. In particular, shining a bright light on the adverse health and educational outcomes associated with systemic racism.

Thus, at this time of incredible challenges, including racial injustice and health disparities, I want to challenge us as current and future physicians to create “new normals” that change our world in a positive way. Where being actively anti-racist is the new normal, where acceptance of data and the scientific method is the new normal, where providing the best medical care for *all* patients is the new normal, and where physicians practice appropriate self-care so that they can better care for others is the new normal.

We need you! We need the best and the brightest, the most creative and passionate, the caring and collaborative, the innovative and the inspired. I am hopeful that you all, the next generation of physicians, with your diverse backgrounds, experiences and passions, will be the driving forces that create a new and more just “normal” of which we can all be proud. Thank you for investing in yourself and your future by attending this meeting. I am so proud of what our SNMA chapter has put together for you.

Welcome to the RMEC, proudly hosted by the Indiana University School of Medicine SNMA Chapter. We are glad that you are here.

All the best,  
Emily C. Walvoord, MD

Associate Dean for Student Affairs  
Medical Student Education  
Professor of Clinical Pediatrics  
Pediatric Endocrinology and Diabetology



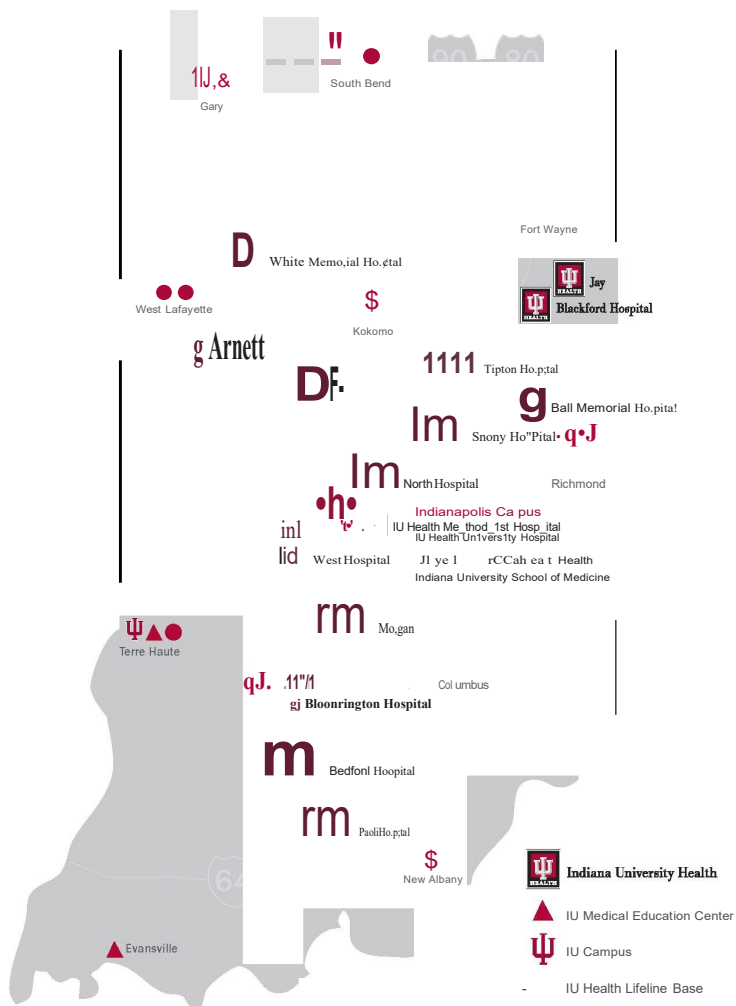
# Physician careers with Indiana University Health

**Indiana University Health is Indiana's most comprehensive healthcare system.** A private, nonprofit organization, IU Health is comprised of hospitals, physicians and allied services dedicated to providing preeminent care throughout Indiana and beyond. Our unique partnership with Indiana University School of Medicine gives our highly skilled physicians access to innovative treatments using the latest research and technology.

- The widest choice of opportunities for physicians and advanced providers
- Nationally ranked for 23 years in a row by *U.S. News & World Report*, including three specialties in the top 50
- Only system in the state of Indiana with 11 national industry accreditations
- A longstanding commitment to providing leading-edge medicine and devotion to improving the health of Indiana communities
- A work environment dedicated to work-life balance
- Resident stipends and loan forgiveness available, when applicable

We are an equal opportunity employer and value diversity and inclusion at IU Health. IU Health does not discriminate on the basis of race, color, religion, sex, sexual orientation, age, disability, genetic information, veteran status, national origin, gender identity and/or expression, marital status or any other characteristic protected by federal, state or local law. We will ensure that individuals with disabilities are provided reasonable accommodation to participate in the job application or interview process, to perform essential job functions, and to receive other benefits and privileges of employment. Please contact us to request accommodation.

To view our current job openings, please visit [iuhealthrecruitment.org](http://iuhealthrecruitment.org).



For more information or to submit a CV:  
[PhysAPrecruitment@iuhealth.org](mailto:PhysAPrecruitment@iuhealth.org)







Antwione Haywood,  
Ph.D.

Assistant Professor  
of Clinical Radiation  
Oncology

Assistant Dean for  
Student Affairs

Welcome to the 2020 Student National Medical Association (SNMA), Region V Medical Education Conference (RMEC), *Changing Lanes: Adapting to a New Normal*. On behalf of the SNMA Indiana University School of Medicine (IUSM) Chapter we extend our warmest welcome. The theme is very timely as increased attention on social justice, recruitment, and vitality for physicians of color remains the highest priority in medicine. These priorities require us to “change lanes” and bring about a new normal in medicine.

Academic medicine is facing many challenges, including rising cost, quality health care delivery, changing the health care environment, and finding a way to help society heal from COVID-19. In the middle of these challenging times is an equally vexing problem, facing all of medicine: systemic racism, which can only be countered with an anti-racism framework. This work truly requires a change in mindset, policy, power, and procedures. The RMEC conference serves as a great platform for raising discussing and cultivating action for the new normal.

The RMEC is the largest gathering for underrepresented physicians, medical students, pre-medical students, and high school students across Region V (Indiana, Michigan, Ohio). The conference serves as a platform for students and professionals to connect on issues impacting underserved communities and underrepresented students in medicine. The goal of RMEC is to create a community with students from different medical schools, graduate schools, undergraduate schools, and high schools in the region for a two-day immersive experience geared towards educating, motivating, networking, and arming participants with the tools and resources for success.

We are living in a very dynamic time for medical schools, one which brings to bear a myriad of viewpoints from various interest groups. We must recognize and cultivate the strengths underrepresented physicians bring to the table beyond the traditional forms of capital.

There is no doubt in my mind that the challenges facing academic medicine will continue to inspire innovation and inventiveness, and I believe the same energy will be required as we aim to alter the course for our medical trainees.

Sincerely,

A handwritten signature in black ink that reads "Antwione Haywood". The signature is fluid and cursive, written over a light blue horizontal line.

Antwione Haywood, Ph.D.  
Assistant Professor of Clinical Radiation Oncology  
Assistant Dean for Student Affairs  
Indiana University School of Medicine

Greetings Region V!

It is my great pleasure to welcome you all to this year's Regional Medical Education Conference! Region V is home, and I am excited to be present for the amazing workshops and speakers the conference team has put together for us. The theme for this year's conference "**Changing Lanes: Adapting to a New Normal**" could not be more timely.

This year, we have faced one change after the other with the onset of a pandemic that altered our premedical and medical education, that devastated our communities, our families. We have experienced resurfacing of systemic racism as we saw incidences of police brutality and the unjust killing of Black men and women. We are in an election year which comes with increased tension across the nation. All of those experiences are on top of whatever else is going on in our personal lives. We are now getting ready to connect with each other virtually, a new normal that I am sure none of us ever expected to experience.

If there is one thing I have learned this year, it is that our SNMA family is not only **ROOTED IN EXCELLENCE**, but also currently filled with resilient members. While this year has been full of setbacks, we have continued to show up and invest in ourselves. Attending this conference is an investment in yourself especially as you continue to progress in your journey to becoming a physician. I hope that you leave this conference inspired and encouraged to adapt to what obstacles might come your way. There will be opportunities to network with amazing speakers and other members who can and will be your support system now and in the future. Take the opportunity to make the best of this virtual arena.

Yours in the SNMA,



Osose Oboh, MPH  
57<sup>th</sup> National President



Osose Oboh, MPH

57<sup>th</sup> National  
President of SNMA



Jasmine S. Holmes

Region V Director

Welcome to the Student National Medical Association (SNMA) Region 5 Members and Guests,

We are excited that you have dedicated your weekend to attend our Virtual 2020 Region 5 Regional Medical Education Conference (RMEC) hosted by the Indiana University School of Medicine (IUSM) SNMA Chapter. The theme for this year's conference, "Changing Lanes: Adapting to a New Normal," is fitting in these times. We challenged our hosting chapter to give you a virtual conference experience that would be just as amazing as it would have been in person. They accepted this challenge, and I believe that you will be impressed with the outcome. This year we have a record-breaking number of exhibitors, multiple workshop tracks, including our newest addition of the high school track, excellent opportunities to interact with other attendings socially, and of course, our inspirational speakers! We also have amazing sponsors that dedicated their time and money to this event because they believed in it and wanted to ensure its success. Region 5 is truly live! Special thanks to our conference hosting chapter, their Diversity and Inclusion Office, IUSM staff and employees, all the sponsors, exhibitors, and physicians that dedicated their time, money, and effort to make this event possible. We hope that you all enjoy all that this conference has to offer!

Sincerely,  
Jasmine S. Holmes  
Student National Medical Association  
Region V Director, 2019-2021  
MD Candidate, 2021  
Wright State University Boonshoft School of Medicine



Deena Mohamed &  
Trilliah Fazle

Co-Committee  
Chairs for RMEC

It is with great pleasure that we welcome all students, faculty, exhibitors, and sponsors to the 2020 Region 5 Medical Education Conference hosted by the Indiana University School of Medicine. The necessity for increased diversity in healthcare continuously grows as the communities in which we reside continue to diversify. In recent times though, this need is becoming even more urgent. Here at IUSM, we are committed to fulfilling this void without our community and region.

The theme, “Changing Lanes: Adapting to a New Normal” is very fitting for this conference. We aim to dismantle the notions that underrepresented minorities are not competent or capable for a career in medicine. This is evidenced by people like Dr. Virginia Caine, our keynote speaker, who is the Indianapolis Community in this unprecedented time of a global pandemic. We plan to provide guidance and mentorship for both pre-medical students looking to pursue a career in medicine and current medical students as they traverse through their medical education towards residency. RMEC 2020 will be beneficial through the breakout sessions, recruitment fair, and hands-on clinical skills activities. We hope to cultivate a welcoming environment throughout the duration of the conference and promote networking and collaboration between students, faculty, and staff here in the Circle City.

The conference will highlight the importance of being able to adapt in this ever changing environment in health care and further taking a dive into the complexities of our social world and the impact it has on us in the health care system and most important those we vow to protect, our patients. This year more than ever, SNMA Region 5 conference will tackle these topics head on as we provide insight on how to navigate through these times as a student aspiring to be a physician, a current medical student or resident. We will address various topics from Racism and the impact this has within our own lives to the unknown surrounding COVID-19 pandemic. In today’s climate, the importance of increasing diversity in our healthcare workforce is paramount. The conference this year will work to emphasize our goal of reaching diversity, equity, and inclusion to all members within the medical community. At the SNMA Region 5 conference we are inviting all to sit at the table and to be a part of the conversation as we strive towards a solution. As we strive towards change. Our goals to reach diversity, equity, and inclusion requires all members of the medical community to be a part of the conversation and the solution.

Again, on behalf of the IUSM Chapter of SNMA, we would like to welcome you all to the Indiana University School of Medicine. We hope you enjoy the conference and choose to matriculate here for medical school, residency and employment!

With respect,

*Deena Mohamed*

Deena Mohamed

*Trilliah Fazle*

Trilliah Fazle

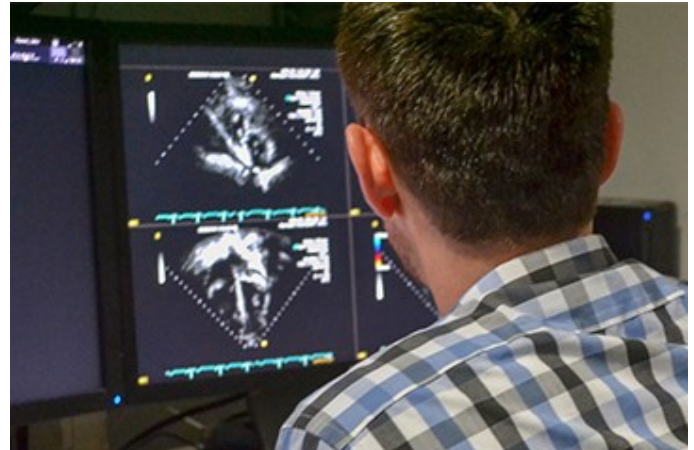


## *What Would my Impact Be as a Cardiovascular (CV) Physician?*

CV physicians include cardiologists, heart and vascular surgeons, and cardiovascular radiologists, working as interdisciplinary teams to address:

- Coronary artery and ischemic heart disease
- Heart failure and cardiomyopathies
- Arrhythmias
- Structural and congenital heart disease
- Aortic disorders
- Peripheral vascular disease
- CV risk and prevention, including family-based care

We work together to discover basic mechanisms of disease, detect early changes before there are complications, and develop better treatments to improve quality and quantity of life for individuals and families.



*The IU Cardiovascular Institute's vision is to be One, diverse academic health enterprise where people come to receive the highest quality heart and vascular care in the community while also enabling relentless innovation that fuels better health.*

**Join us.**

## Program Conference Tracks

### **General (All) Session Track**

This series of workshops is designed for all RMEC attendees. This includes:

- Wellness Events
- Grand Rounds
- Suture Workshop
- Mock Interviews for Medical Students and Pre-Medical Students
- Panel of Physicians of Color
- Research Forum

### **Pre-Medical Student Track**

The Pre-Medical Student track was specifically designed by the SNMA to cater to the needs and interested of pre-medical students who include (but are not limited to): high school students, undergraduate students, post-baccalaureate students, and master program students.

### **Medical Student Track**

The Medical Student Track is designed to provide a vast array of information to medical students of both allopathic and osteopathic medical students.

### **Residents/Fellows**

The Resident/Fellows Track is designed to provide an array of information to residents and/or fellows.

## **Main Stage Events**

### ***Friday, October 23***

#### **Opening Ceremony**

6:00 pm – 7:30 pm

### ***Saturday, October 24***

#### **Panel of Physicians of Color**

3:00 pm – 4:30 pm

#### **Keynote Speaker/Closing Ceremony**

7:00 pm – 8:30 pm

## **Wellness Events**

### ***Saturday, October 24***

#### **Accepting Changing: Meditation with Dr. Trexler**

10:00 am – 10:30 am

#### **Finding Balance in a Time of Unrest: Affirmations with Kristen Health**

10:30 am – 11:00 am

#### **Yoga with Dean Haywood**

11:00 am – 11:30 am

#### **Integrating Health Habits in a Busy Life with Ernest Moore**

11:30 am – 12:00 pm



# **Grand Rounds**

***Saturday, October 24***

**Oral Exam & Skin/Mucosal Findings in People of Color**

10:00 am – 10:30 am

**Neurology Grand Rounds Case**

10:30 am – 11:00 am

**Medical and Molecular Department Genetics Case**

11:00 am – 11:30 am

**Pediatrics Clinical Case**

11:00 am – 11:30 am

**Experience in Kenya/Clinical Cases**

11:30 am – 12:00 pm

**Substance Use in Maternal and Child Health**

11:30 am – 12:00 pm

**Neurosurgery Case**

1:00 pm – 1:30 pm

**Global Health Pediatrics**

1:30 pm – 2:00 pm

**Emergency Trauma Surgery Case**

2:00 pm – 2:30 pm

**Child Abuse Pediatrics Case**

2:30 pm – 3:00 pm

**Emergency Department Grand Rounds Case**

4:30 pm – 5:00 pm







Faculty Affairs, Professional Development, and Diversity is a proud supporter of the Student National Medical Association (SNMA). Congratulations to the Indiana University School of Medicine SNMA Chapter for hosting RMEC 2020.

## Learn About Our Programs

### **Trainees: Students\*, Residents & Fellows^**

Cross Cultural Student Success Retreat\*

Academic Medicine Career Development Conference\*^

Trainee Travel Grant\*^

Faculty in Residence\*^

Implementing Conversations to Advance Racial Equity (ICARE)\*^

Residency Lunch & Learns\*

Underrepresented in Medicine Visiting Elective\*

Underrepresented in Medicine Visiting Residency^

### **Join Us for Upcoming Events**

Patricia Treadwell, MD Women in Medicine Lecture

Culture & Conversation

Stepping Stones of Women in Leadership

LGBTQ Healthcare Conference

Cultural Awareness Town Hall

**DIVERSITY  
IS VITAL**



At Indiana University School of Medicine, we are committed to being active change agents towards diversity, equity, inclusion, and justice. We offer focused, systematic and sustained programming for all members of our campus community that are aligned with three foundational pillars: representational diversity, inclusive working and learning environments, and cultural competence.



**Scan the QR  
code to visit our  
website.**



# High School Track Workshops

## *Friday, October 23*

**Introduction to SNMA and RMEC**  
Ariel Johnson  
3:30 pm – 3:50 pm

**Work/Life Balance: Life as a College Kid Panel**  
Ariel Johnson & Katherine Almengo  
4:00 pm – 4:50 pm

**Do's & Don't's: College Admissions Edition**  
Esther Mburu, Alaina Durden & Kiara Devese  
5:00 pm – 5:50pm

## *Saturday, October 24*

**Coagulation Cascade**  
Theresa Blanks, Dr. Marlow, Dr. Meeks, Mrs. Tate & Deborah Sudduth  
9:00 am – 9:50 am

**Research 101, Summer & Pre-Med Opportunities**  
Ariel Johnson, Katherine Almengo, Adom Whitaker, Razan Eltilib & Ariel O  
11:00 am – 11:50 am



**Research Forum**  
12:00 pm – 12:50 pm

**Resume Building**  
Kendra Parker, Kiara Devese, Selina Batchanoo, Katherine Almengo & Chisom Nwagbo  
Aryn Hubbard  
1:00 pm – 1:50 pm

**Expanding the Face of Medicine**  
Ariel Johnson & Katherine Almengo, Dr. Maykel Desir (Physician), Kurtis Dickson (PA), Aaron Crittendon (4<sup>th</sup> year dentistry student), Aganette Joseph (Hospital Admin), Ashley Maxie-Moreman (Psychologist) & Marsha Homuska (Nurse)  
2:00 pm – 2:50 pm

**Panel of Physicians of Color**  
Dr. Zellars, Dr. Simons, Dr. Neal, Dr. Sevilla, Dr. Treadwell, Dr. Lloyd & Dr. Dungey-Poythress  
3:00 pm – 4:20 pm

**Demystifying COVID-19**  
Matthew & Alanna, Dr. Graham Carlos & Dr. Abdulla Pratt  
4:30 pm – 5:20pm

**College Personal Statement**  
Esther Mburu, Alaina Durde, Kiara Devese, Krista Scott & Taylor Yarborough  
5:40 pm – 6:30 pm

# **Pre-Medical** **Student Track**

## ***Friday, October 23***

**Personal Statement Workshop**  
3:00 pm – 4:00 pm

**Mastering the Application Cycle (How to Prepare for VIRTUAL Interviews)**  
3:00 pm – 5:00 pm

**Networking 102: The Vital Skill of Creating Authentic Relationships**  
5:00 pm – 6:00 pm

**Non-Traditional Student Workshop (Adjusting to Medical School)**  
5:00 pm – 6:00 pm

**MCAT Exam Taking Strategies: Tackling CARS**  
5:00 pm – 6:00 pm

**Patient Advocacy**  
5:00 pm – 6:00 pm

**Opening Ceremony**  
6:00 pm – 7:30 pm

**Social Event**  
8:00 pm – 11:00 pm

## ***Saturday, October 24***

**Bouncing Back: Failure and Success**  
10:00 am – 11:00 am

**Mo' Money, Less Problems: Managing the Costs of Medical School**  
11:00 am – 12:00 pm

**Street Medicine**  
11:00 am – 12:00 pm

**How New Challenges Stimulate New Bridge Building**  
11:00 am – 12:00 pm

**Awkward but Necessary: Self Advocacy in COVID ERA**  
1:00 pm – 2:00 pm

**Unlocking Your Inner Mentor: How to Become an Effective Mentor**  
1:00 pm – 2:00 pm

**CV/Research Opportunity Workshop**  
1:00 pm – 2:00 pm

**Straight Talk with Dr. L: Tips for Crucial Conversations**  
1:00 pm – 2:00 pm

**RACISM!**  
2:00 pm – 3:00 pm

**Community Partnership & Addressing Health Disparities**  
2:00 pm – 3:00 pm

**Changing Tables to Climb Ladders**  
2:00 pm – 3:00 pm

**Political Climate & Engagement in 2020 and Beyond**  
4:30 pm – 5:30 pm

**Demystifying COVID-19**  
4:30 pm – 6:30 pm

**Closing Ceremony**  
7:00 pm – 8:30 pm

**Social Events**  
9:00 pm – 11:00 pm

# Medical Student Track

## *Friday, October 23*

**How to Address Racism in Primary Care Pediatrics**

3:00 pm – 4:00 pm

**Networking 102: The Vital Skill of Creating Authentic Relationships**

3:00 pm – 6:00 pm

**Exam Taking Strategies, Step 1**

5:00 pm – 6:00 pm

**Patient Advocacy**

5:00 pm – 6:00 pm

## *Saturday, October 24*

**Thou Shall Not...: Things to Know Before Going to Rotations**

10:00 am – 11:00 am

**Applying to Residencies and Fellowships Panel**

10:00 am – 11:00 am

**Bouncing Back: Failure and Success**

10:00 am – 11:00 am

**Diversity in Medical Education Preparing for the Match**

10:00 am – 11:00 am

**Crafting Families in Medicine: Secondary Paths in Medicine**

11:00 am – 12:00 pm

**Street Medicine**

11:00 am – 12:00 pm

**How New Challenges Stimulate New Bridge Building**

11:00 am – 11:45 am

**Research Forum**

12:00 pm – 1:00 pm

**Unlocking Your Inner Mentor: How to Become an Effective Mentor**

1:00 pm – 2:00 pm

**Combined Emergency Prepared**

1:00 pm – 2:00 pm

**Pathways in Medicine Panel**

1:00 pm – 2:00 pm

**CV/Research Opportunity Workshop**

1:00 pm – 2:00 pm

**Straight Talk with Dr. L: Tips for Crucial Conversations**

1:00 pm – 2:00 pm

**Money Boot Camp: Finances 101**

1:00 pm – 2:30 pm

**Changing Tables to Climb Ladders**

2:00 pm – 3:00 pm

**Putting Your Mask on First**

2:00 pm – 3:00 pm

**Dermatoses in Children of Color**

2:00 pm – 3:00 pm

**RACISM!**

2:00 pm – 3:00 pm

**Community Partnership & Addressing Health Disparities**

2:00 pm – 3:00 pm

**Panel of Physicians of Color**

3:00 pm – 4:30 pm

**Trust Me! ... I'm the Doctor: Navigating Clinic as a New Doctor**

4:30 pm – 5:30 pm

**Political Climate & Engagement in 2020 and Beyond Speakers**

4:30 pm – 5:30 pm

**Physicians as Community Leaders – Outreach Clinic**

4:30 pm – 5:30 pm

**Demystifying COVID-19**

4:30 pm – 6:30 pm

**Being Black in Medical School**

5:30 pm – 6:30 pm

**Keynote Speaker / Closing Ceremony**

7:00 pm – 8:30 pm

**Social Event**

9:00 pm – 11:00 pm

## **Residents/Fellows**

### **Friday, October 23**

**Networking 102: The Vital Skill of Creating Authentic Relationships**  
3:00 pm – 6:00 pm

**Patient Advocacy**  
5:00 pm – 6:00 pm

**Opening Ceremony**  
6:00 pm – 7:30 pm

**Social Event**  
8:00 pm – 11:00 pm

### **Saturday, October 24**

**Bouncing Back: Failure and Success**  
10:00 am – 11:00 am

**Street Medicine**  
11:00 am – 12:00 pm

**How New Challenges Stimulate New Bridge Building**  
11:00 am – 12:00 pm

**Unlocking Your Inner Mentor: How to Become an Effective Mentor**  
1:00 pm – 2:00 pm

**CV/Research Opportunity Workshop**  
1:00 pm – 2:00 pm

**Straight Talk with Dr. L: Tips for Crucial Conversations**  
1:00 pm – 2:00 pm

**Money Boot Camp: Finances 101**  
1:00 pm – 2:30 pm

**RACISM!**  
2:00 pm – 3:00 pm

**Community Partnership & Addressing Health Disparities**  
2:00 pm – 3:00 pm

**Changing Tables to Climb Ladders** 2:00 pm – 3:00 pm

**Physicians as Community Leaders – Outreach Clinic**  
4:30 pm – 5:30 pm

**Political Climate & Engagement in 2020 and Beyond**  
4:30 pm – 5:30 pm

**Demystifying COVID-19**  
4:30 pm – 6:30 pm

**Closing Ceremony**  
7:00 pm – 8:30 pm

**Social Events**  
9:00 pm – 11:00 pm



## Workshops

### Mock Interviews:

- We will be hosting **Medical School Mock Interviews** for pre-medical students
  - This includes high school students, undergraduate students, graduate students (masters programs or post-baccalaureate programs) or students who are in their gap year.
- We will be hosting **Mock Residency Interviews for current medical students**
  - Go to <https://go.iu.edu/3jWR> to sign up if you want to practice your interviewing skills!

### Suture Clinic:

- Learn from our distinguished surgical faculty to increase your knot tying skills!
- Suture workshops will be ongoing from 10:00 am – 2:30 pm with an hour break for lunch at 12:00 pm – 1:00 pm
- Each workshop will be approximately 30 minutes long
  - Go to <https://go.iu.edu/3jWS> to participate in the Suture Clinic
- For the suture clinic, it is important that each participant has their own suture kit for the workshop. Go to <https://go.iu.edu/3jWT> for a recommended suture kit from our facilitators. However, please feel free to purchase any kit of your choice.





**"To me, diagnostic radiology has become the center of all clinical medicine."**



Residents, like *Aiza Ashraf, MD*, and *Robert Griffith, MD*, and faculty are transforming the field of radiology through achievements in research, education, diagnostic imaging and minimally invasive procedures at IU School of Medicine.

**13**

residency positions

**120**

radiology faculty

**10**

clinical hospitals

Join a virtual session to learn more about the Radiology and Imaging Sciences family at IU School of Medicine!



**SCHOOL OF MEDICINE**  
RADIOLOGY AND IMAGING SCIENCES

*Supports the SNMA*



**Ann & Robert H. Lurie  
Children's Hospital of Chicago**

Lurie Children's is the top pediatric care provider in Illinois. We have outpatient centers and primary care services throughout the city and suburbs, giving more kids access to our world-class specialists.

[luriechildrens.org/locations](http://luriechildrens.org/locations)

## *Virtual Exhibitor Fair*

Advocate Children's Hospital  
Park Ridge

Alameda Health System

Alameda Health System

Alameda Health System -  
Highland Hospital

Ann & Robert H. Lurie  
Children's Hospital of  
Chicago

Case Western Reserve  
University School of  
Medicine

Colorado Family Medicine  
Residencies

Eisenhower Medical Center

Emory University  
Department of Medicine

Harbor - UCLA Medical  
Center

Henry Ford Hospital

IU School of Medicine -  
Department of Neurology

IU School of Medicine -  
Department of Urology

IU School of Medicine -  
Department of Physical  
Medicine and Rehabilitation

IU School of Medicine -  
Department of Surgery

IU School of Medicine -  
Graduate Medical Education

IU School of Medicine -  
Admissions

IU School of Medicine -  
Department of Emergency  
Medicine

IU School of Medicine -  
Department of  
Ophthalmology

IU School of Medicine -  
Department of Radiology

Kaiser Permanente San Diego  
Emergency Medicine  
Residency Program

Loma Linda University  
Emergency Medicine  
Residency

Marian University College of  
Osteopathic Medicine

Mayo Clinic

Mercy Health - St Rita's  
Medical Center

Mercy Health Grand Rapids  
Family Medicine Residency

Northeast Ohio Medical  
University

Northwestern University

Oakland University William  
Beaumont School of  
Medicine

Ohio State University Wexner  
Medical Center

Ohio University Heritage  
College of Osteopathic  
Medicine

OhioHealth

Rush University Medical  
Center

Southwest Indiana Internal  
Medicine Residency

Spectrum Health

The Christ  
Hospital/University of  
Cincinnati Family Medicine  
Program

The Ohio State University  
College of Medicine

Tulane University

Tulane University - Internal  
Medicine Residency Program

UCLA Ronald Reagan | Olive  
View Emergency Medicine  
Residency Program

University of California San  
Francisco

University of California,  
Riverside/RCH

University of Cincinnati

University of Michigan

University of Rochester  
Medical Center - Department  
of Orthopedic Surgery

University of Toledo College  
of Medicine and Life Sciences



## Speakers

### Opening Speakers

**Alvaro Tori, MD**

Associate Dean for Diversity Affairs, IU School of Medicine

**Antoine Haywood, PhD**

Assistant Dean for Medical Student Education

**Deena Mohamed**

Third Year Medical Student, IU School of Medicine

**Emily C. Walvoord, MD**

Associate Dean for Student Affairs

**Jay Hess, MD, PhD**

Executive VP for University Clinical Affairs Dean of Indiana University School of Medicine

**Patricia Treadwell, MD**

Special Advisor to the Dean and Chief Diversity Officer

**Trilliah Fazle**

Second Year Medical Student, IU School of Medicine

### Keynote Speaker

**Virginia Caine, MD**

Bicentennial Professor

### Closing Speakers

**Jasmine Holmes**

Region V Director & Fourth Year Medical Student

**Paul Wallach, MD**

Executive Associated Dean for Educational Affairs & Institutional Improvement

### Workshop Speakers

**Abdula Pratt, MD**

Assistant Professor, University of Chicago Medical Center

**Alvaro Tori, MD**

Associate Dean for Diversity Affairs, IU School of Medicine

**Alyssa (Gerth) Brogden, DO**

Resident Physician, The Christ Hospital/University of Cincinnati Family Medicine Program

**Amit Nag**

Fourth Year Medical Student, IU School of Medicine

**Amma Boakye, DO**

Internal Medicine Pediatrics Resident Physician, The MetroHealth System

**Andreia Alexander, MD**

Assistant Program Director, IUSM  
Emergency Residency Program  
Assistant Professor of Emergency Medicine, IU School of Medicine

**Ann Osuntokun, MD**

Pediatrics, Private Practice  
Peyton Manning/Ascension Medical Group  
Clinical Assistant Professor of Pediatrics, Marian University College of Medicine

**Anna Feliciano**

Second Year Medical Student, IU School of Medicine

**Annette De Leon, DO**

Internal Medicine Resident, Riverside Methodist - OhioHealth

**Ashleigh Omorogbe, MD**

Emergency Medicine Resident, George Washington University Hospital

**Astian Waite, DO**

Psychiatry Resident, Detroit Medical Center

**Ayodamola Otun**

Fourth Year Medical Student, Washington University School of Medicine

**Bobbi J. Byrne, MD**

Vice Chair for Education, IUSM  
Department of Pediatrics  
Professor of Clinical Pediatrics, IU School of Medicine

**Brittany Allison, PhD**

Assistant Director of Undergraduate  
Research and National Fellowships,  
Carnegie Mellon University

**Brittney-Shea Herbert, PhD**

Assistant Dean for Physician Scientist  
Development, IU School of Medicine

**Celestina Okoye**

Fourth Year Medical Student at IU  
School of Medicine

**Chemen Neal, MD**

Director of Holistic Success and  
Advocacy, IU School of Medicine

**Cheron Perkins**

Second Year Osteopathic Medical Student,  
Philadelphia College of Osteopathic  
Medicine

**Christopher Obeime, MPH, OD, MD**

Physician, Clinical Assistant Professor of  
Dermatology, Marian University College of  
Medicine

**Clark Simons, MD**

Faculty Advisor, IUSM SNMA Chapter  
Associate Professor of Clinical Surgery, IU  
School of Medicine

**Courtney Brooks, DO**

Second Year Family Medicine Resident, The  
University of Tennessee Health Science Center

**Danisha McCall, MD**

Board-Certified Neonatologist, The Women's Hospital  
in Newburgh, Indiana

**Dana F. Potts, CFP, CLU, ChFC, CCPS**

Wealth Management Advisor, Northwestern Mutual  
Life

**Darrian Bost, MD**

Pediatrics/Psychiatry/Child & Adolescent Psychiatry  
Resident, PGY-2, IU School of Medicine

**Destiny Jamison, DO**

Pediatric Resident Physician PGY-2, Akron  
Children's Hospital

**Debra Rusk, MD**

Assistant Dean for Career Mentoring,  
Educational Affairs, IU School of Medicine  
Assistant Professor of Clinical Emergency  
Medicine, IU School of Medicine  
Assistant Professor of Clinical Pediatrics, IU  
School of Medicine

**Ellen Geddes, MD, RES**

Medical Director of Cardiovascular  
Genetics  
Riley Hospital for Children Associate  
Program Director  
Medical Genetics Residency Associate Professor of  
Genetics & Pediatrics,  
Indiana University

**Ernest Moore**

Certified Health Coach, Personal Trainer

**Gerardo Maupome, PhD**

Associate Director of IU Community Health  
Partnerships (CHEP), IU School of Dentistry

**Ginat Mirowski, DMD, MD, FAAD**

Adjunct Clinical Professor of Dermatology, IU School of  
Medicine

**Giovanni Rodriguez, MD**

Emergency Medicine Physician Resident, Harvard  
Affiliated Emergency Medicine Program

**W. Graham Carlos III, MD**

Associate Professor of Medicine, IU School of  
Medicine  
Joseph J. Mamlin Chief of Medicine, Eskenazi  
Health

**Gustavo Arrizabalaga, PhD**

Assistant Dean for Diversity Affairs, IU School of  
Medicine

**Haider Al-Awadi**

MD-MBA Candidate, IU School of Medicine

**Iyabode Okoro, EdD**

Lead Academic Advisor, IU School of Medicine

**J'Aimee Lippert, DO**

Neuromusculoskeletal Medicine Specialist, Green  
Bay, WI

**Javier Sevilla-Martir, MD**

Assistant Dean for Diversity Affairs, IU School of  
Medicine

**Jerry Smartt, MD**

Physician, Adjunct Clinical Assistant Professor of Neurology  
Smartt Neurology, PC, IU School of Medicine

**Jill Harman**

Senior Director of Admissions & Recruiting, Ohio University Heritage College of Osteopathic Medicine

**Jordan Askew, DO**

PGY-2 Emergency Medicine Resident, Norma Regional Health System

**Jordan Holmes, MD, MPH**

Assistant Professor of Radiation Oncology, IU School of Medicine

**Jordan Jones, DO**

Emergency Medicine Resident, Norman Regional Health System

**Jose Espada**

Director of Financial Aid, IU School of Medicine

**Katherine McHugh, MD**

Assistant Professor of Clinical Obstetrics & Gynecology, IU School of Medicine

**Kimberly Adu-Gyamfi**

Second Year Medical Student, Michigan State University College of Human Medicine

**Kraig Kinchen, MD, MSc**

Senior Director, Center of Expertise, Global Patient Outcomes and Real World

**Kristen Heath, MS**

Lead Advisor & Statewide Wellness Coordinator, IU School of Medicine

**Kyle Anderson, MBA, PhD**

Clinical Assistant Professor in Business Economics, IU Kelley School of Business

**Laura Allen**

Third Year Medical Student, Northeast Ohio Medical University  
Region 5 Human Political Advocacy Liaison, Student National Medical Association

**Lauren Dungy-Poythress, MD**

Associate Professor of Clinical Obstetrics & Gynecology, IU School of Medicine

**Lee Patterson, MD, FAAP**

Board-Certified in Pediatric Primary Care, Regional Health Clinic

**Manuela Gil-Cupello**

Fourth Year Medical Student, IU School of Medicine

**Marcus Moses**

MD/MPH Student, Tulane University School of Medicine & School of Public Health and Tropical Medicine

**Max Jacobo Madriñán, PhD, MEM**

Associate Professor, Department of Environmental Science

**Mercy Obeime, MD, DIMPH**

Family Medicine Physician, Liaison, Francis Health & Marion County public Health Department

International Medicine, Public Health, Hospice and Palliative Medicine, Addiction Medicine

**Michael Adjei, MD**

Categorical Anesthesiology Resident, IU School of Medicine

**Michael Rice, PhD**

Associate Directory, Admissions & Recruitment, Ohio University Heritage College of Osteopathic Medicine

**Michael Trexler, PhD**

Mental Health Clinician, IU School of Medicine

**Miracle Anokwute, MD**

Neurological Surgery Resident, IU School of Medicine

**Mitali Thanawala, MD**

Pediatric Resident, IU School of Medicine

**Morgan Bryant**

Fourth Year Medical Student, Wright State University Boonshoft School of Medicine

**Morgan Jivens**

Ohio University Heritage, College of Osteopathic Medicine

**Nanette Lacuesta, MD**

System Program Director for Physician Diversity Initiatives, OhioHealth

**Nia James**

Medical Student, University of Pittsburgh  
School of Medicine

**Niki Messmore, MS**

Program Director of Community & Civic  
Engagement, IU School of Medicine

**Nkemdi Agwaramgbo**

Fourth Year Medical Student,  
University of South Alabama College  
of Medicine

**Onome Oboh**

Fourth Year Medical Student, Michigan State  
University College of Human Medicine

**Palka Patel, MD**

Hospitalist, Eskenazi Hospital (Indianapolis)

**Patrick Clements, MD**

Professor of Clinical Pediatrics, IU  
School of Medicine

**Patricia Treadwell, MD**

Special Advisor to the Dean and Chief Diversity  
Officer

**Renee Akins, MA**

Associate Director of Admissions, IU School of  
Medicine

**Richard Zellars, MD**

Department of Radiation Oncology Chair, IU School of  
Medicine  
William A. Mitchell Professor of Radiation Oncology

**Robert Freter**

Third Year Medical Student, University of Rochester  
School of Medicine and Dentistry

**Ryan R. Harris, MD**

Assistant Professor of Clinical Psychiatry, IU School  
of Medicine

**Sacha Sharp, PhD**

Assistant Professor of Medicine, IU School of  
Medicine

**Sara Wiehe, MD, MPH**

Division Chief of Children's Health Services Research  
in Pediatrics, IU School of Medicine  
Associate Dean of Community and Translational  
Research, IU School of Medicine

**Sarah M. Stelzner, MD**

Assistant Professor of Clinical  
Pediatrics, IU School of Medicine

**Sierra Clark**

Fourth Year Medical Student, Wright  
State University Boonshoft School of  
Medicine

**Shannon Thompson, MD**

Assistant Professor of Clinical Pediatrics,  
IU School of Medicine

**Sydney Labat**

Medical Student, Tulane University School of  
Medicine  
Co-Founder, The 15 White Coats

**Sydney Rucker, MAT**

Director of Diversity Initiatives, IU School of Medicine

**Tabitha Hardy, PhD**

Assistant Dean for Student Development  
and Academic Affairs, IU School of  
Medicine

Advisor Underrepresented Professional  
and Graduate Student Organization, IUPUI

**Tina Harris, MD**

Radiology, IUHP, Assistant Professor of Clinical  
Radiology, IU School of Medicine

**Vanni Rodriguez, MD**

Emergency Medicine Resident, IU School of Medicine

**Vicki Bonds, MS, Med**

Director of Pipeline and Pre-Doctoral Programs, IU  
School of Medicine

**Wale Osuntokun, MD**

Psychiatry, Senior Medical Director in late phase  
Immunology Drug Development

# THANK YOU

to our Sponsors

## Diamond Sponsors

**ESKENAZI**  
HEALTH



Indiana University Health



**SCHOOL OF MEDICINE**  
ANESTHESIA



**INDIANA UNIVERSITY**  
SCHOOL OF MEDICINE

FACULTY AFFAIRS | PROFESSIONAL DEVELOPMENT | DIVERSITY



**SCHOOL OF MEDICINE**  
DEPARTMENT OF PEDIATRICS



**MARION COUNTY**  
**PUBLIC**  
**HEALTH**  
DEPARTMENT

Prevent. Promote. Protect.



**INDIANA UNIVERSITY**  
SCHOOL OF MEDICINE

**EDUCATIONAL AFFAIRS**

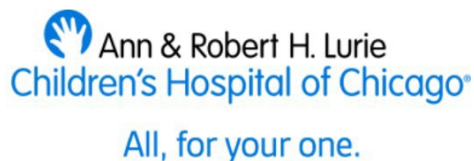
## Platinum Sponsors



## Gold Sponsors



## Silver Sponsors



## Champion Sponsors

